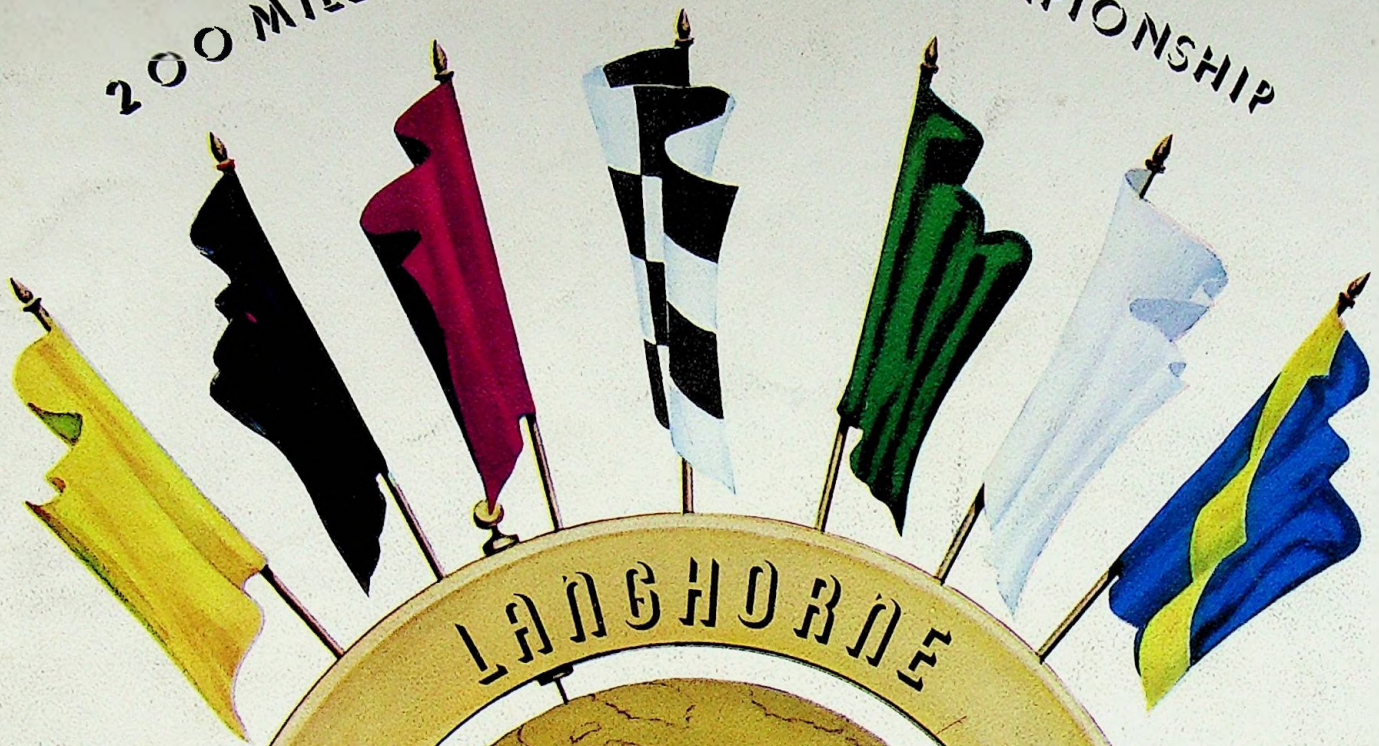


Bud Kellou 28373
511
200 MILE NATIONAL OPEN CHAMPIONSHIP



Price One Dollar

OFFICIAL SOUVENIR PROGRAM



Official Program

LANGHORNE INTERNATIONAL MOTOR SPEEDWAY

SUNDAY, OCTOBER 10, 1971

Officials

RACE ORGANIZERS - IRVIN FRIED AND ALBERT D. GERBER
 PUBLICITY DIRECTOR - BEN BOROWSKY
 CHIEF STEWARD - GEORGE DEAL
 ASSISTANT STEWARD - ED LAWRENCE
 STARTER - NICK FORNORO
 ANNOUNCER - BILL SINGER
 GUEST ANNOUNCER - JIM BEAVAN
 CHIEF SCORER - PAUL SHATTUCK
 CHIEF TIMER - FRED SHATTUCK
 CHIEF OBSERVER - ELWOOD WALKER
 FIRE CHIEF - JOE KEYS
 SCOREBOARD MANAGER - WALT WARWICK
 TRACK SUPERINTENDENT - HARRY HARRINGTON
 SOUND AND COMMUNICATION - LES BISHOP

TECHNICAL STEWARDS - LARRY GRANGER
 CHICK SEVERANCE
 WES DODD

QUALIFYING AND COMPETITION STEWARDS

CHAIRMAN - DIRK VAN ORT
 PAT BUCK
 MARTY BEBERWYK
 JOHN CEDARBORG
 RALPH HELD

PANEL OF INSPECTORS, OBSERVERS AND CAUTION JUDGES

ROY BATCHELOR	HAROLD KECK
BOB O'ROURKE	RAY MARTIN
BILL JAMES	BUD BOEKENKAMP
RED SEARCH	BILL YONKERS

EQUIPMENT

OFFICIAL PACE CAR - COURTESY OF REEDMAN MOTORS, LANGHORNE, PA.
 SERVICE TRUCKS - REEDMAN MOTORS - SCRAPPY'S AUTO SERVICE

SERVICES

AMBULANCE AND HOSPITAL SERVICE - BUCKS COUNTY RESCUE SQUAD
 FIRE FIGHTING PERSONNEL FROM LANGHORNE, NEWPORTVILLE, TREVOSE AND HATFIELD VOLUNTEER FIRE COMPANIES



TIME SCHEDULE FOR TODAY

12:00 Noon - Neshaminy High School Redskin Marching Band featuring Lori Lasker, World's Champion Baton Twirler.
 Anna Lyons, Miss Langhorne Speedway of 1971.
 12:30 P.M. - National Anthem - Neshaminy Band
 Flag Raising - Middletown Township Police
 12:45 P.M. - Ceremonies and Introductions at Starting Line.
 1:25 P.M. - Drivers Meeting at Starting Line.
 1:55 P.M. - Start of Pace Lap.
 2:00 P.M. - Start of 200 Mile National Open Championship Race of 1971.



LAP PRIZE SPONSORS

The management of Langhorne International Motor Speedway takes this opportunity to express its sincere appreciation to the following people, firms and organizations, whose warm racing spirit and generosity has created the 1971 lap prize fund for the 200 Mile National Open Championship Race.

AMOUNT	SPONSOR
\$101.00	-- DEVILS BOWL SPEEDWAY, WEST HAVEN, VERMONT
100.00	-- AREA AUTO RACING NEWS
100.00	-- FRANKLAND RACING EQUIPMENT, P. O. BOX 278, RUSKIN, FLA. 33570
100.00	-- TWO GUYS DEPARTMENT STORE, NEXT TO THE SPEEDWAY
50.00	-- ARNOLD'S RACE TIRE SERVICE, 1229 NEW WILLOW ST., TRENTON, N. J.
50.00	-- RAY COOK'S RACING WHEELS ! RAY COOK, 513 HELENA AVE., WYCKOFF, N. J.
50.00	-- COOPERS SPEED SHOP, INC., 1825 ROTH AVE., ALLENTOWN, PA. 18104
50.00	-- FLEMINGTON FAIR SPEEDWAY
50.00	-- HAGERSTOWN RACEWAY, P. O. BOX 701, HAGERSTOWN, MD. 21740
50.00	-- HOLIDAY INN OF BRISTOL, PA. HOLIDAY INN NORTH, CORNWELL HEIGHTS, PA.
50.00	-- LERNERVILLE SPEEDWAY, 278 N. PIKE RD., SARVER, PA. DON MARTIN, OWNER
50.00	-- JOHN NAUGHTON INSURANCE, INC., P. O. BOX 6192, PROVIDENCE, R. I. 02904
50.00	-- ORANGE CO. FAIR SPEEDWAY, INC., MIDDLETOWN, NEW YORK
50.00	-- ROY'S RACING TIRES & SPEED EQUIP., INC., 815 HELLAM ST., WRIGHTSVILLE, PA.
50.00	-- SELINGSGROVE & WILLIAMS GROVE SPEEDWAY
50.00	-- SHANGRI-LA SPEEDWAY, OWEGO, NEW YORK
50.00	-- TOBIAS SPEED EQUIPMENT, INC., 433 S. 9TH ST., LEBANON, PA. 17042
50.00	-- CHARLES TROMBETTA, JR. - IN MEMORY OF TED WEBBE
50.00	-- WALL STADIUM-HOME OF AUTO RACING ON THE NEW JERSEY SHORE-RTE. 34, BELMAR, N.J.
40.00	-- BARNEY'S SPEED SHOP, ALBANY, NEW YORK
40.00	-- CALIFORNIA SPEED AND SPORT SHOP, NEW BRUNSWICK, N. J.
35.00	-- FRANK MYRONCUK & SON, INC.-HOUSE MOVERS, P. O. BOX 338, NEW EGYPT, N. J. 98533
30.00	-- HOWARD JOHNSON MOTOR LODGE, 2991 BRUNSWICK PIKE, TRENTON, N. J.
30.00	-- LEBANON VALLEY SPEEDWAY
30.00	-- F. L. WARD & SON -- WELDER
25.00	-- AUTO RACING CLUB OF HAGERSTOWN, P. O. BOX 502, HAGERSTOWN, MD.
25.00	-- BELMONT'S GARAGE, 633 W. MAPLE AVE., LANGHORNE, PA.
25.00	-- BRISTOL MOTOR INN, BRISTOL, PA.
25.00	-- CULLURA BROS. CATERING, BRISTOL, PA.
25.00	-- SHERATON-PENNSPIKE MOTOR INN, FORT WASHINGTON, PA.
25.00	-- STARLIGHT DINER, LANGHORNE, PA.
25.00	-- TRANSMATIC TRANSMISSIONS, RTE. 1, LANGHORNE, PA.
25.00	-- GEORGE WASHINGTON EAST MOTOR LODGE, U.S. RTE. 1 AT TPKE., TREVOSE, PA.
20.00	-- JOSEPH BULLOCK, AUTO WRECKER AND GENERAL SCRAP DEALER, WARRINGTON, PA.
20.00	-- CHICK CARON'S SPEED PARTS, 2310 NORWICH, NEW LONDON TPKE., UNCASVILLE, CONN.
20.00	-- LEW HUNTER'S RACING FUEL, FLEMINGTON & NAZARETH, 1101 S. 10TH ST., PHILA., PA.
20.00	-- QUALITY DRUGS LUNCH ROOM, COUNTRY CLUB SHOPPING CENTER, SOUTH OF SPEEDWAY
20.00	-- TOM'S AUTO ACCESSORIES, 501 BROADWAY, ELMIRA, N. Y. 14904
10.00	-- SAMMY BEAVERS FAN CLUB
10.00	-- WILL CAGLE FAN CLUB - DOREEN & DORIS ANN REILLY, PRES. & VICE PRES.
10.00	-- DEL-VAL MOTEL, BRISTOL, PA.
10.00	-- JIM FLANNERY'S RESTAURANT, PENNDEL, PA.
10.00	-- FREDDY'S I.V., 157 N. MAIN ST., NORWICH, CONN.
10.00	-- LARRY E. HICKS, LOT 84, MARTINDALE TRAILER COURT, R.D. 3, MECHANICVILLE, N. Y.
10.00	-- DUTCH HOAG FAN CLUB
10.00	-- KODAK PARK ATHLETIC ASSOCIATION AUTO RACING BOOSTERS CLUB
10.00	-- LEE OSBORNE FAN CLUB
10.00	-- TRACKSTAR HELMETS, FLORAL PARK, N. Y.
10.00	-- TREADWAY-MOHAWK INN & RESTAURANT, 4200 ROOSEVELT BLVD., PHILA., PA. 19124
10.00	-- VISIT LAND OF MAKE BELIEVE, UPPER JAY, N.Y., IN THE ADIRONDACK MTS. OWNER-A. MONACO
25.00	-- DAVE KNEISEL'S SPEED-SPORT SERVICE, CLARK SUMMIT, PA.
10.00	-- VIC'S SPEED SHOP, 201 MAIN ST., McSHERRYSTOWN, PA.

IN ACKNOWLEDGMENT

The management of Langhorne International Motor Speedway gratefully acknowledges the splendid cooperation and support that the promoters of the speedways listed below and of the racing officials of the many participating race organizations, whose interest and aid have contributed immeasurably to the successful organization of the 200 Mile National Open Championship Race. Through their combined efforts the following list of 1971 National Championship Qualifying race winners, at the following list of tracks, are preferred* starters in today's race.

Winning Driver	Residence	Track	Promoter
Fred DeSarro	Hope Valley, R. I.	Albany-Saratoga Speedway	Larry Mendelsohn
Andy Romano	Johnstown, N. Y.	Devils Bowl Speedway	Charles Richards
Sam Beavers	White House Sta., N. J.	Flemington Fair Speedway	Paul R. Kuhl
Lou Lazzaro	Utica, N. Y.	Fonda Speedway	James L. Gage
Merv Treichler	Sanborn, N. Y.	Fulton Raceway	Millard Benway
Red Nininger	Jefferson, Md.	Hagerstown Raceway	Allen Stouffer
Charles Jarzombek	Riverhead, N. Y.	Islip Speedway	Larry Mendelsohn
Larry Wright	Claysburg, Pa.	Jennerstown Speedway	Jennerstown Enterprise, Inc.
Chuck Boos	Lewiston, N. Y.	Lancaster Speedway	Ed Serwacki
Tom Corellis	Rensselaer, N. Y.	Lebanon Valley Speedway	Louis Spanier
**Dick Swartzlander	Sarver, Pa.	Lernerville Speedway	Bucky Fleming
**Frank Schneider	Flemington, N. J.	Nazareth Speedway	Jerry Fried
**Bob Malzahn	Matamoras, Pa.	Orange Co. Fair Speedway	Al Howard
Buzzie Reutimann	Asbury, N. J.	Reading Fairgrounds	Lindy Vicari & Al Gasperi
Joe Krukowski	Southold, N. Y.	Riverhead Raceway	Thomas Galan
**Lee Osborne	Etters, Pa.	Selinsgrove Speedway	Jack Gunn
Geoff Bodine	Chemong, N. Y.	Shangri-La Speedway	F. F. Gitchell & Mike Spok
Richie Evans	Rome, N. Y.	Spencer Speedway	Delbert & Walter Spencer
Jim Hoffman	Freehold, N. J.	Wall Stadium	Mrs. Jenny Nicol
**Mitch Smith	Harrisburg, Pa.	Williams Grove Speedway	Jack Gunn

*The fastest 5 qualifiers from among the twenty preferred starters hold the first five starting positions in the race. All preferred starters who qualify at a speed of 107 M.P.H. or faster become guaranteed starters in the race. Preferred starters whose qualifying speed is less than 107 M.P.H. lose their preferred status.

**Alternate to winner.



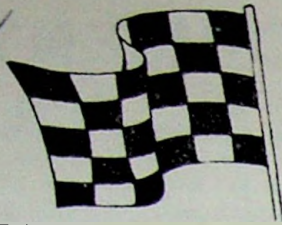
PAST WINNERS

NATIONAL OPEN CHAMPIONSHIP RACE

1951 HULLY BUNN
 1952 JIM DELANEY
 1953 TED SWAIN
 1954 FRANKIE SCHNEIDER
 1955 PETE COREY
 1956 DON 'DUTCH' HOAG
 1957 JIM GUTHRIE
 1958 JIM DELANEY
 1959 JIM DELANEY
 1960 DON 'DUTCH' HOAG

1961 BOB MALZAHN
 1962 FRANKIE SCHNEIDER
 1963 DON 'DUTCH' HOAG
 1964 FREDDY ADAM
 1965 BILL SLATER
 1966 WILL CAGLE
 1967 DON 'DUTCH' HOAG
 1968 DON 'DUTCH' HOAG
 1969 RAY HENDRICK
 1970 MERV TREICHLER

132 Took Time
160 Entry



471

Official

200 MILE NATIONAL

Car No.	Score board No.	Driver *Preferred Starter	Residence	Owner	Car-Year Make	Engine
00	32.320	Buzzie Reutimann	Asbury, N. J.	Same	'37 Chev.	'71 Chev.
0 NY	2.322	Marcel Godard	Montreal, Canada	Denton F. Dow	'65 Mstng	'68 Chev.
1	31.650 1.571	*Charles Jarzombek Jr.	Riverhead, N. Y.	Same	'35 Chev.	'70 Chev.
1A		Gene Mangino	Schenectady, N. Y.	Same	'37 Chev.	'71 Chev.
35 1A		Ron Bouchard		Richard Armstrong	'37 Chev.	'70 Chev.
1		Joy Fair	Pontiac, Mich.	W. R. Gillelan	'69 Chev.	'71 Chev.
XL 1				Don House	'56 Ford	'67 Ford
2X	30.677 0.541	Gene Bergin	Enfield, Conn.	Robert Judkins	'71 Ford	'70 Chev.
2		Philip J. Spiak	Troy, N. Y.	Bertrand Schneider	'68 Cam.	'71 Chev.
3	32.532	Lew Hennessy	Freeport, N. Y.	Jerry Bartlett	'38 Chry.	'68 Ford
3	32.491 2.332	Butch Harris	Bath, N. Y.	3A Racing Team	'36 Chev.	'69 Chev.
3	31.709 1.432	*Fred DeSarro	Hope Valley, R. I.	Len Boehler	'37 Chev.	'70 Chev.
V3	30.582	Gary Reddick	Watertown, N. Y.	Same	'37 Chev.	'70 Chev.
3		Edward Pieniazek	Waterford, N. Y.	Peter Corey	'66 Corv.	'68 Chev.
3X	32.007 2.127	Ben Stephens	Newark Valley, N. Y.	Joe Norton	'37 Chev.	'70 Chev.
4	31.310 3.122	*Lou Lazzaro	Utica, N. Y.	Same	'37 Chev.	'71 Chev.
5	32.002 2.266	Lawrence Edwards	Wyalusing, Pa.	Boyce Edwards	Chev.	Chev.
5	32.319 4.222	Buddy Camp	Marmora, N. J.	William Brennen	'37 Stude	'68 Plym.
6		Charlie Angerman	Northfield, N. J.	Robert Houser	'37 Chev.	'66 Ford
7		Franz Wohlgemuth	Baldwin, N. Y.	Edward T. Kircher	'62 Falc.	'69 Chev.
7	30.011 2.522	Dutch Hoag	Bath, N. Y.	5D Cars	'69 Cam.	'69 Chev.
7-11		*Joseph Krukowski	Southold, N. Y.	Tom Ambrose	'36 Chev.	'71 Chev.
7	32.630 2.630	Mike Grbac	Somerset, N. J.	Joe Scamardella	'35 Chev.	'71 Chev.
8	32.202 2.177	Jim Tyler SA.	Mattituck, N. Y.	Mary Tyler	'38 Plym.	'71 Chev.
8	31.708 1.356	Jim Stampine	Clay, N. Y.	Same	'39 Ford	'70 Chev.
8		Whip Davis	W. Hartford, Conn.	Same	'36 Chev.	'70 Chev.
8X		Paul Rochelle	Hackettstown, N. J.	Frank Ariano	'37 Plym.	'70 Chev.
9	33.065 2.435	Leo Cleary		Bill Corazzo	'38 Chev.	'70 Chev.
9	32.328	*Chuck Boos	Lewiston, N. Y.	Stephanie Boos	'36 Chev.	'71 Chev.
9	33.071 1.381	Larry Sargent	Elmira, N. Y.	Allison Schutt	'63 Ford	'70 Ford
09	31.601 30.980	Bryan H. Osgood	Elmira, N. Y.	Same	'65 Corv.	'71 Chev.
09	32.815 2.616	Bob Santos	Millis, Mass.	Arthur Barry	'36 Chev.	'71 Chev.
V-9		George Wagner	Levittown, N. Y.	Same	'66 Mstng	'69 Chev.
10	31.110	Bob Hudson	Rochester, N. Y.	Peter Snyder	'37 Chev.	'70 Chev.
11		*Jim Hoffman	Union Beach, N. J.	Same	'37 Chev.	'69 Chev.
11	31.062 0.915	Ray Hendrick	Richmond, Va.	Clayton Mitchell	'67 Cam.	'71 Chev.
11	32.557 2.131	Dick Fowler	New Hartford, N. Y.	Same	'69 Chev.	'70 Chev.
12	32.011 1.202	Larry Nye	Preble, N. Y.	Donald Hyatt	'37 Chev.	'70 Chev.
13	32.182 16.122	Dick Emerson	Rochester, N. Y.	Bob Hann	'62 Falc.	'69 Chev.
13		Wayne A. Mead	Conklin, N. Y.	Same	'38 Chev.	'70 Chev.
14	31.871 31.936	Don Stives	East Windsor, N. J.	Barney & Morrison	'36 Chev.	'71 Chev.

Entry List

OPEN CHAMPIONSHIP



Car No.	Score board No.	Driver *Preferred Starter	Residence	Owner	Car-Year Make	Engine
15	7.100	Graeme Bolia	Constantia, N. Y.	Al McClure	'37 Ford	'68 Ford
15	8.200	Bugs Stevens	Rehoboth, Mass.	John Koszela, Jr.	'36 Chev.	'71 Chev.
15	34.800	Hank Dudley	Brick Town, N. J.	Same	'37 Chev.	'71 Chev.
16	23.72	Ronald Wallace	Fulton, N. Y.	Dick Bloom	'36 Chev.	'69 Chev.
17	37.70	Jerry Dostie	Guilford, Conn.	Robert Johnson	'35 Chev.	'69 Chev.
17		Donald Sanders	Fairport, N. Y.	Same	'40 Chev.	'70 Cad.
17		Mike Grbac	Somerset, N. J.	Joe Scamardella	'35 Chev.	'71 Chev.
18	1.810	*Lee Osborne	Lebanon, Pa.	Ray Turner	Corv.	'69 Corv.
19	38.00	Kenny Brightbill	Sinking Spring, Pa.	Same	'67 Cam.	'70 Chev.
19	32.50	Eddie Delmolino	Gt. Barrington, Mass.	Same	'37 Chev.	'71 Chev.
21	31.80	Cliff Tyler, Jr.	Cutchogue, N. Y.	Phil Dickerson	'68 Cam.	'69 Chev.
21	38.70	Laudan Potts	Orwigsburg, Pa.	P & H Diesel	'37 Chev.	'70 Chev.
22	31.70	Tom Green	Bordentown, N. J.	R. M. Acuff	'36 Chev.	'70 Chev.
22	1.200	Dave Lape	Fort Plain, N. Y.	Warren Lape	'67 Cam.	'70 Chev.
23	31.478	George Hewitt	Uncasville, Conn.	Fred Doolittle	'37 Chev.	'71 Chev.
24		Norm Schmidlin	Rochester, N. Y.	Same	'64 Corv.	'69 Chev.
24	1.042	Will Cagle	Somerville, N. J.	Same	'36 Chev.	'71 Chev.
24	32.300	Kenny Shoemaker	Westmere, N. Y.	Henry Natale	'36 Chev.	Chev.
26		*Shem C. Nininger	Jefferson, Md.	Ed Breeden	'65 Chev.	'70 Chev.
27	32.400	Harry Peck	Schenectady, N. Y.	Same	'64 Chev.	'71 Chev.
27		Richard Kluth	Hilton, N. Y.	Les Groves	'37 Ford	'69 Chev.
28		Bob Pickel	Flemington, N. J.	Bill McConnell	'36 Chev.	'69 Chev.
28	32.700	*Tommy Corellis	Rensselaer, N. Y.	28 Racing Team, Inc.	'36 Chev.	'71 Chev.
28		Bill Brice	Belmar, N. J.	Same	'37 Chev.	'69 Chev.
29		Ernest Gahan	Dover, N. H.	Dusseault & True	'36 Chev.	'71 Chev.
31		Chip Cregar	Trenton, N. J.	Charles Cregar	'65 Mstng	'70 Chev.
33	32.400	Bob Merz	Webster, N. Y.	Same	'35 Chev.	'70 Chev.
34		Jim Malone	Southampton, N. Y.	Carl Zeh	'37 Ford	'69 Ford
34	5.000	Dave Nichols	Macedon, N. Y.	H-Remm Racing	'66 Corv.	'71 Chev.
36	33.910	Hal Browning	Mt. Airy, Md.	Sam Glover	'37 Chev.	'70 Pont.
37	4.100	George Hedges	Bridgehampton, N. Y.	Same	'38 Chev.	'69 Chev.
38	31.100	Jerry Cook	Rome, N. Y.	Pete Hollebrand	'62 Falc.	'71 Chev.
38		Dan McLaughlin	Toms River, N. J.	Same	'37 Chev.	'70 Chev.
41	3.100	Wayne Edwards	LeRaysville, Pa.	Cal Smales	'37 Ford	'70 Chev.
45		Freddy Adam	Kutztown, Pa.	William Mason	Plym.	Chev.
50	32.300	Denis Giroux	Cohoes, N. Y.	E. Paul Emerick	'36 Chev.	'71 Chev.
51		Terry Edwards	St. Catharines, Ont., Can.	Same	'37 Chev.	'71 Chev.
51	3.500	Glen A. Vandewinckel	Ontario, N. Y.	Frank Gulick	'68 Chev.	'71 Chev.
52	3.500	Tommy Comerford	Neptune, N. J.	Roger Jones	'40 Chev.	'69 Chev.
52	3.500	Wayne Johnson	Eden, N. C.	Billy Johnson	'68 Chev.	'71 Chev.
PJ54		Joseph Catalano	Webster, N. Y.	Same	'36 Chev.	'68 Chev.

QUALIFYING RACE WINNERS



FRED DeSARRO
ALBANY-SARATOGA SPEEDWAY



ANDY ROMANO
DEVILS BOWL SPEEDWAY



SAM BEAVERS
FLEMINGTON FAIR SPEEDWAY



LOU LAZZARO
FONDA SPEEDWAY



RED NININGER
HAGERSTOWN RACEWAY



CHARLES JARZOMBK
ISLIP SPEEDWAY



LARRY WRIGHT
JENNERSTOWN SPEEDWAY



CHUCK ROOS
LANCASTER SPEEDWAY



TOM CORELLIS
LEBANON VALLEY SPEEDWAY

12th AT ?



The first 20 mile race

FOR 25 OF THE 50 FASTEST NON-QUALIFIERS FROM THE OFFICIAL TIME TRIALS

Car No.	Color	Driver	Owner	Qualifying Order	Qualifying Time	Starting Position	Finishing Position
10		Hudson					
3 41		Edwards	WAYNE				
17		DOTSIE					
4 21		Tyler					
78		GARY RIKENT					
45		WOOLBY	DWS				
370		WINTERS	OUT				
2 0		SEAMAN					
11		FOLWER					
4		GODARD	OUT				
77		KRAMMER	OUT				
24		SHANNON	OUT				
13 65			WRECK IN TIME				
C-88		SITTING	OUT				
3V		NICHOLS	OUT				
5		EDWARDS (LARRY)	OUT				
14		STIVERS	OUT				
89		MORAL					
84		M VROCHOU					
U-3		REDDICK	OUT				
3		HENNESSY					
1		FAIN					
S-2		SCARFF	OUT				
23		ROSS					
9		CLARY	DWS				

52 TIME OF RACE..... MIN. 9..... SEC..... 100's



The second 20 mile race

FOR 25 OF THE 50 FASTEST NON-QUALIFIERS FROM THE OFFICIAL TIME TRIALS

Car No.	Color	Driver	Owner	Qualifying Order	Qualifying Time	Starting Position	Finishing Position
3 12		NYE					
2 83		Thudole					
5 63		moody					
711		Wright Kwisk					
13		Ferguson					
3X		STEVENS					
21		RAPPENTY					
1 33		menz					
4 8		TYLER					
16		Wallace					
3A		Harris					
50		Groviy					
27		PICK					
231		Blake Conrath					
7		Gambac					
09		.					
X		Jolley					
X89		Hanson					
98		Manucci					
77		Kilheaven					
35		Bouchard					
82		Letcher					
97		LESSON					
2-1		WAGNER					
65		Knoupa					

TIME OF RACE..... MIN. 10 SEC..... 100's

The Flags . . . from the driver's seat

Although the drivers that you will see in competition today may appear to be the most haphazard and devil-may-care competitors in the world of sports, their actions while on the track, either in practice or competition, are very strictly covered by the racing flag code, and the penalty for disobeying these flags is disqualification. Although the meanings of the vari-colored flags are well known to most racing fans, let's review them as you will see them used today by the starter. Imagine yourself the passenger in one of the competing cars as the driver explains the meanings of the various flags:



THE GREEN FLAG . . . Here we go again. This is the starting gun, the opening whistle . . . the race is on! The green flag tells us that the race is officially started, and during the long events, keeps us informed that the track is clear ahead . . . hang on! Here comes that first turn!



THE RED FLAG . . . As always, this is the danger flag. Just like the red in a stop sign, it means STOP . . . and right now! There may have been a bad spill . . . perhaps someone has been hurt, or the track is completely blocked . . . when we see this one, we get stopped as quickly as we can. The race may be restarted, but let's find out what happened first.

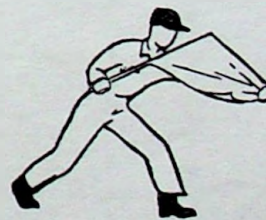


THE CROSSED FLAGS . . . Half way! Crossed flags tell us that the race is half over. It makes no difference which ones the starter uses. He holds the cloth of the flags along the handle so we don't confuse his meaning . . . if it's a "hundred-miler," this signal means that there are only fifty to go . . . can't back off yet!



THE BLACK FLAG . . . This is the "consultation flag," telling me to pull into the pits on the next lap . . . it is often called the disqualification flag, but it doesn't necessarily mean that I have done something wrong . . . a part may be hanging loose from my car, about to fall on the track in front of the other machines in the race. Can't ignore this signal . . . if I get it more than twice, I'll be disqualified!

THE BLUE FLAG WITH DIAGONAL STRIPE . . . This is the "passing flag." It indicates that a faster car is about to lap me . . . he has already passed me, and he now has a complete lap on me. This flag tells me to "hold my groove" or position on the track until I am passed. There he goes . . . but I'm not worried . . . he may not last long at that pace.



THE WHITE FLAG . . . This one means simply "one more lap" . . . we've been a little too busy to count them, and this lets us know that we are starting on that last long lap. We're always glad to see this one, but the one we really wait for is:



THE YELLOW FLAG . . . This is the "caution flag." It tells us to slow down; to hold our position until the green flag is thrown again. The yellow flag indicates that there has been an accident on the track, or that the track has been partially blocked by a stalled car or a thrown wheel or other object. The yellow flag will remain out until the officials have determined that no one is injured seriously or that the track is not completely blocked. If there is a "safety car," we must remain in line behind it until either the red or green flag is displayed.



THE CHECKERED FLAG . . . This is the big one, the one we've been waiting for . . . it means it's all over but the shouting. We all want to get under this one first, but of course we can't all do it. We keep trying, though, and I guess that's why you keep coming back. Thanks for the ride? Don't mention it . . . come again. And remember, when you drive your own car, although there are no flag signals, keep your eye on those traffic signs and obey them . . . they're the "flag signals of the highway."

KEEP A RECORD OF LEADING CARS BY LAPS

Check Off the Leaders During the Race

10 Laps	20 Laps	30 Laps	40 Laps	50 Laps
1	1	1	1	1
2	2	2	2	2
3	3	3	3	3
4	4	4	4	4
5	5	5	5	5
6	6	6	6	6
7	7	7	7	7
8	8	8	8	8
9	9	9	9	9
10	10	10	10	10
60 Laps	70 Laps	80 Laps	90 Laps	100 Laps
1	1	1	1	1
2	2	2	2	2
3	3	3	3	3
4	4	4	4	4
5	5	5	5	5
6	6	6	6	6
7	7	7	7	7
8	8	8	8	8
9	9	9	9	9
10	10	10	10	10

KEEP A RECORD OF LEADING CARS BY LAPS

Check Off the Leaders During the Race

110 Laps	120 Laps	130 Laps	140 Laps	150 Laps
1.....	1.....	1.....	1.....	1.....
2.....	2.....	2.....	2.....	2.....
3.....	3.....	3.....	3.....	3.....
4.....	4.....	4.....	4.....	4.....
5.....	5.....	5.....	5.....	5.....
6.....	6.....	6.....	6.....	6.....
7.....	7.....	7.....	7.....	7.....
8.....	8.....	8.....	8.....	8.....
9.....	9.....	9.....	9.....	9.....
10.....	10.....	10.....	10.....	10.....
160 Laps	170 Laps	180 Laps	190 Laps	200 Laps
1.....	1.....	1.....	1.....	1.....
2.....	2.....	2.....	2.....	2.....
3.....	3.....	3.....	3.....	3.....
4.....	4.....	4.....	4.....	4.....
5.....	5.....	5.....	5.....	5.....
6.....	6.....	6.....	6.....	6.....
7.....	7.....	7.....	7.....	7.....
8.....	8.....	8.....	8.....	8.....
9.....	9.....	9.....	9.....	9.....
10.....	10.....	10.....	10.....	10.....

51. 74

88

8

23

50

9

HAD POT

70. 74

58

8

23

23

90 74

58

2

59

61

FEATURE 200 Mile National

• RACE LINEUP and TIME TRIAL RESULTS •

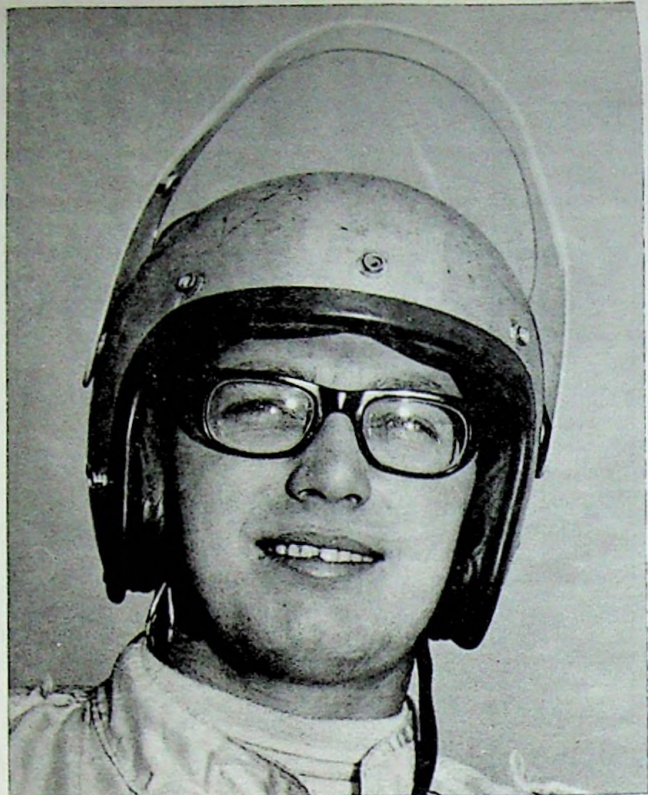
Car No.	Color		Driver	Owner	Qualifying Time	Starting Position	Finishing Position	Notes
30	1	*	Badine		30.066	1st	35	WRECK
61	2	*	Evans		.669			125 BLEW
58	3	*	M. Treichlen		.958			195 WRECK
4	4	*	Razzano		31.087			
82 00	5	*	Reutemann		.322			
74	6		R. Treichlen		30.120			
7	7		D. Hoagy		.471			High End
21	8		Bargin		.561			BLEW
15	9		B. Stevens	no show	.609			
11	9 10		Hendrick		.722	P.T.		55 Trouble Tire BLEW
17	10 11		Hurtubise		.868			WRECK
09	12		Osgood		.980			190 BLEW
38	13		Gault	no show	.987			
19	14		M. Forette		31.028	30		WRECK
24	15		Cagle		.642	SPW		
88	16		Roeschen		.167			
22	17		T. Green		.177	SPW		
23	16 18		G. Hewitt		.312			BLEW
8	19		Shampine		.318			
36	20		D. Hendon		.417	OUT		52 WRECK
15	21		G. Bolia		.438			
54	22		Burdick		.468	20		OUT Engine
55	23		G. Treichlen		.481	SPW		
69	24		Chartrand		.530	P.T.		95 WRECK 100 WRECK 206 WRECK
02	25		S. Kape	no show	.527			
18	26	*	OSBORNE		.559			
72	27		Rudolph		.564			
12	28		Max Barber	no show	.576			
3	29	*	De Sarno	no show	.638			
56	25 30		G. Dwag		.666			

TIME OF RACE _____ MIN. _____ SE

* preferred

SPEED CHART

Seconds per lap	Speed 1 mile track	Speed 1/2 mile track	Seconds per lap	Speed 1 mile track	Speed 1/2 mile track
25.0	144.00	72.00	35.0	102.85	51.425
1	143.42	71.71	1	102.56	51.28
2	142.85	71.425	2	102.27	51.135
3	142.29	71.145	3	101.98	50.99
4	141.73	70.865	4	101.69	50.845
5	141.17	70.585	5	101.40	50.70
6	140.62	70.31	6	101.12	50.56
7	140.07	70.035	7	100.84	50.42
8	139.53	69.765	8	100.55	50.275
9	138.99	69.495	9	100.27	50.135
26.0	138.46	69.23	36.0	100.00	50.00
1	137.93	68.965	1	99.72	49.86
2	137.40	68.70	2	99.44	49.72
3	136.88	68.44	3	99.17	49.585
4	136.36	68.18	4	98.90	49.45
5	135.84	67.92	5	98.63	49.315
6	135.33	67.665	6	98.36	49.18
7	134.83	67.415	7	98.09	49.045
8	134.32	67.16	8	97.82	48.91
9	133.82	66.91	9	97.56	48.78
27.0	133.33	66.665	37.0	97.29	48.645
1	132.84	66.42	1	97.03	48.515
2	132.35	66.125	2	96.77	48.385
3	131.86	65.93	3	96.51	48.255
4	131.38	65.69	4	96.25	48.125
5	130.90	65.45	5	96.00	48.00
6	130.43	65.115	6	95.74	47.87
7	129.97	64.85	7	95.49	47.745
8	129.49	64.745	8	95.23	47.615
9	129.03	64.515	9	94.98	47.49
28.0	128.57	64.285	38.0	94.73	47.365
1	128.11	64.055	1	94.44	47.22
2	127.65	63.825	2	94.24	47.12
3	127.20	63.60	3	93.99	46.995
4	126.76	63.38	4	93.75	46.875
5	126.31	63.155	5	93.50	46.75
6	125.87	62.935	6	93.26	46.63
7	125.43	62.715	7	93.02	46.51
8	125.00	62.50	8	92.78	46.39
9	124.56	62.265	9	92.54	46.27
29.0	124.13	62.065	39.0	92.30	46.15
1	123.71	61.855	1	92.07	46.035
2	123.28	61.64	2	91.83	45.915
3	122.86	61.43	3	91.60	45.80
4	122.44	61.22	4	91.37	45.685
5	122.03	61.015	5	91.13	45.565
6	121.62	60.81	6	90.90	45.45
7	121.21	60.605	7	90.68	45.34
8	120.80	60.40	8	90.45	45.225
9	120.40	60.20	9	90.22	45.11
30.0	120.00	60.00	40.0	90.00	45.00
1	119.60	59.80	1	89.77	44.885
2	119.20	59.60	2	89.55	44.775
3	118.80	59.405	3	89.33	44.665
4	118.42	59.21	4	89.10	44.55
5	118.03	59.015	5	88.88	44.44
6	117.64	58.82	6	88.66	44.33
7	117.26	58.63	7	88.42	44.21
8	116.88	58.44	8	88.23	44.115
9	116.50	58.25	9	88.01	44.005
31.0	116.12	58.06	41.0	87.80	43.90
1	115.75	57.875	1	87.59	43.785
2	115.38	57.69	2	87.77	43.885
3	115.01	57.505	3	87.16	43.58
4	114.64	57.32	4	86.95	43.475
5	114.28	57.14	5	86.74	43.37
6	113.92	56.96	6	86.53	43.265
7	113.56	56.76	7	86.33	43.165
8	113.20	56.60	8	86.12	43.06
9	112.85	56.425	9	85.91	42.955
32.0	112.50	56.45	42.0	85.71	42.855
1	112.14	56.07	1	85.51	42.755
2	111.80	55.90	2	85.30	42.65
3	111.45	55.725	3	85.10	42.55
4	111.11	55.555	4	84.90	42.45
5	110.76	55.38	5	84.70	42.35
6	110.42	55.21	6	84.50	42.25
7	110.09	55.545	7	84.30	42.15
8	109.75	54.875	8	84.11	42.055
9	109.42	54.71	9	83.91	41.955
33.0	109.09	54.545	43.0	83.72	41.86
1	108.76	54.38	1	83.52	41.76
2	108.43	54.215	2	83.33	41.665
3	108.10	54.05	3	83.14	41.57
4	107.78	53.89	4	82.94	41.47
5	107.46	53.73	5	82.75	41.375
6	107.14	53.57	6	82.56	41.28
7	106.82	53.41	7	82.37	41.185
8	106.50	53.25	8	82.19	41.095
9	106.19	53.095	9	82.00	41.00
34.0	105.88	52.94	44.0	81.81	40.905
1	105.57	52.785	1	81.63	40.815
2	105.26	52.63	2	81.44	40.72
3	104.95	52.475	3	81.26	40.63
4	104.65	52.325	4	81.08	40.54
5	104.34	52.17	5	80.89	40.445
6	104.04	52.02	6	80.71	40.355
7	103.74	51.87	7	80.53	40.265
8	103.44	51.72	8	80.35	40.175
9	103.15	51.575	9	80.17	40.085
			45.0	80.00	40.00



MERV TREICHLER - 1970 NATIONAL OPEN CHAMPION. QUALIFYING RACE WINNER, FULTON RACEWAY, 1971



FRANKIE SCHNEIDER - 1954, 1962 NATIONAL OPEN CHAMPION. QUALIFYING RACE WINNER, NAZARETH SPEEDWAY, 1971.

RULES, REGULATIONS, SPECIFICATIONS AND CONDITIONS FOR THE 200 MILE NATIONAL OPEN CHAMPIONSHIP

INTRODUCTION

The rules, regulations, conditions and specifications governing the running of this event have been devised with a two-fold purpose; to afford an equal opportunity for fair competition to the majority of those car owners and drivers entered, and to provide the maximum safety conditions possible. The majority of cars and drivers entered in this event will be subjected to the highest competition speeds in which they will ever have engaged on a race track. Accordingly all cars will undergo a strict safety inspection at the Speedway prior to time trials.

DRIVER QUALIFICATION AND ELIGIBILITY

All veteran drivers and those who in the opinion of the stewards and officials shall have had a sufficient background of professional stock car racing experience, and who shall have competed in at least six open competition or independently sanctioned race programs, or in six programs at qualifying speedways during the current race season, shall be eligible to compete in the official time trials.

PREFERRED STARTERS

Every driver who shall have won a National Championship Qualifying Race in the current series shall be designated as a preferred starter in the 200 Mile National Open Championship Race. All preferred starters are required to file entries and take official time trials. The fastest five preferred starters will have the first five starting positions in the order of their qualifying times. The remaining preferred starters will be awarded starting positions in the order of their qualifying times along with the fastest qualifiers from among the general entries, subject to restrictions set forth below.

STARTING FIELD - 200 MILE RACE

20
All preferred starters who qualify at 107 M.P.H. or faster, the fastest twenty-three qualifiers from the time trials and the winners of the two special races. All preferred starters who fail to qualify at 107 M.P.H. or better shall be replaced in the starting field from among the front finishers in the two special races starting with the 2nd place finishers. If an odd number are to be replaced, then the greater number of replacements shall be taken from that special race which is run in the fastest time.

STARTING FIELD - TWO 20 MILE RACES

The fastest fifty non-qualifiers shall be divided into two groups, in the order of their qualifying times, in odd and even numbers. First, third, fifth, etc. to 49th shall constitute the starting field for the first special race. Second, fourth, sixth, etc. to 50th shall constitute the starting field for the second special race.

BAD WEATHER PROCEDURES

In the event that weather conditions shall require the cancellation of time trials, then starting positions shall be determined by a drawing, to be held as follows:

1. The preferred starters will draw for the first five starting positions.
2. The remaining preferred starters will draw for positions number six to number forty-five.
3. All other entrants will draw for the remaining starting positions.

In the event that weather conditions shall interrupt time trials to the extent that the starting fields for any of the race events cannot be completed, then the Race Officials shall in their discretion determine the best and fairest method of completing the starting fields, i.e., by combination of times officially recorded and one or more drawings.

REFUND OF FEES

1. In the event that any entry is rejected on the basis of insufficiency of driver's racing experience, or for any other cause, notice of rejection will be given and refund of entry and inspection fees will be made on or before September 30, 1971. Where rejection is based on driver qualifications, the car owner shall have the option of substituting another driver.
2. In the event that any car shall fail to pass inspection, the entry fee will be refunded. The inspection fee will not be refunded in such case.
3. Entries withdrawn voluntarily by owners and drivers prior to September 30th will receive a refund of both entry and inspection fees. Entries withdrawn between October 1st and October 7th will receive a refund of the inspection fee only.

MISCELLANEOUS PROVISIONS

1. Drivers must wear fire retardant coveralls and an approved type of crash helmet which must be in good condition.
2. Qualifying trials, the two special 20 mile races and the 200 Mile Championship Race will be conducted in accordance with the ground rules in force at Langhorne Speedway.
3. Standard flag signals will be used.
4. After the race is underway, cars may be started by hand pushing in the pit area only. Under no circumstances is any car to be pushed or towed to the race track from the pit area.
5. All cars must be numbered in numerals not less than eighteen (18) inches high on both sides, roof and rear deck. In the event of duplication of numbers among the entries, the entry first filed in point of time shall take precedence and number of the later entry shall be changed. In such cases numbers shall be assigned by the stewards.
6. All entrants are required to comply with all rules, regulations and conditions herein contained and attached hereto and with the requirements of all supplementary bulletins published in connection with the event, which will be mailed to all entrants with notice of acceptance of entry.
7. Any protests must be made within 30 minutes of the dropping of the checkered flag.
8. The five first finishers will be impounded for inspection and weight check.

1. ELIGIBLE MODELS

Any make or model of American closed passenger cars with factory-made steel roof of the years 1935 to 1968, the stock wheel base of which is not less than 107 inches, and later models the stock wheel base of which is not less than 107 inches or more than 114 inches, excepting station wagons, jeeps, suburbans and convertibles are eligible to compete in the Sportsman class at Langhorne Speedway, subject only to the limitations hereinafter set forth.

2. BODIES

(a) In models where fenders are molded part of the body, they may not be removed or abbreviated except to the extent necessary for tire clearance. Substantially installed rub-rails, nerfing bars and crash rails are required on all cars to prevent contact and locking of spinning wheels in competition. See Appendix "A" and "B". (Next page.)

(b) All doors must be bolted (half-inch bolts), or welded, or secured with not less than 3/8" diameter cable and "U" bolts. Where bolts are used wing nuts are required. Where doors are welded they must be cut down six inches and the metal rolled so as to leave no sharp edges. Remaining door section must be reinforced from within.

(c) The top part of the engine hood is compulsory, must extend over the radiator and must be safely fastened. Side panels of hood may be bored with holes not exceeding 3/4 inch in diameter for cooling.

(d) Floorboards must be complete in driver compartment between front and rear firewalls.

(e) Nothing may be cut or abbreviated except for clearance and/or reinforcement.

(f) Body width must conform to stock measurement for the year, make and model of the body. There must be a minimum of 54 inches of overall height from ground to roof except in those cases where the original stock measurement is less.

(g) Installation of "spoilers", "wings" or other similar devices is prohibited.

3. BRAKES

Only hydraulic four wheel brakes in good working condition will be allowed. Hand operated brakes are not permitted.

4. CRASH BARS

Crash bars or bumpers are required front and rear. See Appendix "B". (Next page.)

5. STARTER AND BATTERY

(a) All cars must be equipped with self starter in working order and must be able to leave pits and starting line under their own power.

(b) Any type ignition permitted. Batteries must be located under floor or engine hood and may not be located in driver or fuel compartment.

6. EXHAUST

Exhaust pipes must terminate outside the body, no further to the rear than the rear edge of the door to the driver's compartment.

7. ENGINE LIMITATION

(a) Multiple carburetion allowed on flatheads and six cylinder engines under 300 cu. inches. Only one carburetor of factory type production will be permitted on overhead valve engines. No fuel injectors, superchargers, or home made carburetors will be permitted.

(b) Engines may be moved to any position in frame provided an adequate firewall separates engine from driver and the safety factor has not been lowered thereby.

8. FUEL AND FUEL TANKS

(a) Commercial grades of gasoline will be the only fuels permitted.

(b) All cars must be equipped with fuel tanks of not more than 22 GALLONS CAPACITY, CONTAINING FUEL CELLS. All cars must be so equipped in order to pass inspection, and to engage in practice, qualifying and/or racing. Fuel tanks may not extend rearward beyond the rear limits of the rear tires more than the absolute minimum distance necessary, and may not extend above the top level of the rear deck. The rear of the tank must be well protected by an adequate bumper installation. Fuel tanks may not be press-

urized and there must be a quick shut off valve located at floor level in driver compartment.

(c) A steel fire wall of not less than 20 gauge thickness must be securely fastened on top, bottom and sides and must separate driver from fuel compartment.

(d) It is recommended that fuel lines run under bottom of body. Plastic fuel lines are not permitted. Copper lines running through body must be covered by rubber hose. Approved fire proof aviation hose allowed. Braided neoprene hoses are permissible. Fuel pump must be under floor of car or under engine hood. Fuel pump bowls may not be made of glass.

(e) No rubber hose connection will be permitted from fuel tanks to filler spouts except where a ball check valve is used in the filler assembly. Filler spout must not extend outside of body shell or be fastened to body or rear deck lid.

9. GLASS

(a) Headlights must be removed and holes suitably covered.

(b) A safety glass windshield is compulsory on driver's side. Other glass may be removed.

(c) Rear window openings may be enlarged only enough to permit entry of tires.

10. RADIATOR AND COOLING SYSTEM

Any type may be used except that no auxiliary cooling tanks or radiators may be located in driver's compartment. Catch can required.

11. SEATS, BELTS AND HARNESS

Bucket type seats must be used. Back of seat must extend to the top of drivers' shoulders with substantially padded headrest above. Seats must be welded or bolted to frame of car. Approved quick release safety belt must be used. Belt must be securely fastened to both sides of seat and also fastened to a chain which is looped around frame. An approved shoulder or diagonal type harness with quick release is mandatory and must be securely fastened to the frame of the car.

12. STEERING

All steering parts must pass safety inspection.

13. CHASSIS, WHEEL BASE & GROUND CLEARANCE

(a) Chassis may be strengthened but not altered or cut except as hereinafter provided. Wheel base and tread must conform to stock measurement, to be governed by the year, make and model of the body. The race stewards are empowered to permit a uniform degree of tolerance in checking these measurements.

(b) Channeling and sectioning not permitted. Chopping permitted only to the extent necessary to accommodate modern racing drive lines.

(c) There must be a minimum of two and one-half inches of ground clearance. This limitation shall extend to all parts, including oil pans, Pitman arms, etc.

14. WHEELS

Dual wheels are not permitted. Safety hubs on front wheels are recommended.

15. ROLL BARS

Front and rear roll bars, connected by cross and side bars and securely fastened to the frame are mandatory. Rear roll bars must be padded with foam rubber not less than one inch thick taped from the bottom of the window opening on the left side to center of the top rear roll bar.

16. TIRES

Only tires in excellent condition will be permitted for practice, qualifying and racing. Tire tread width must be under 15 inches. Tires must be of approved racing type only.

17. OIL SYSTEM

All components carrying and housing lubricants must be tight so as to avoid dripping or spillage of oil.

18. MINIMUM WEIGHT

Car must weigh not less than 2650 lbs. wet, not including ballast weight that is unrelated to the car's structural, engine or body parts.

EXCEPTIONS

The race stewards are empowered to permit minor deviations from any of the specifications herein set forth, where in their opinion the safety factor is not lowered.

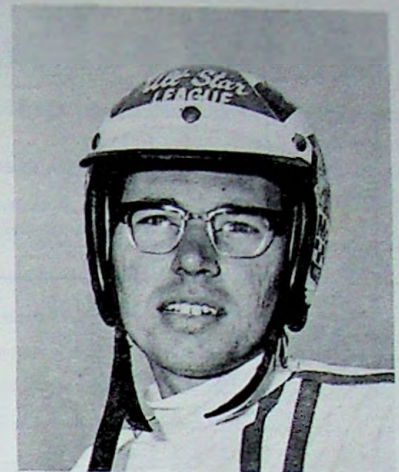
QUALIFYING RACE WINNERS



DICK SWARTZLANDER
LERNERVILLE SPEEDWAY



BOB MALZAHN
ORANGE CO. FAIR SPEEDWAY



BUZZIE REUTIMANN
READING FAIRGROUNDS



JOE KRUKOWSKI
RIVERHEAD RACEWAY



LEE OSBORNE
SELINGROVE SPEEDWAY



GEOFF BODINE
SHANGRI-LA SPEEDWAY



RICHIE EVANS
SPENCER SPEEDWAY



JIM HOFFMAN
WALL STADIUM



MITCH SMITH
WILLIAMS GROVE SPEEDWAY



Official 200 MILE NATIONAL

Car No.	Score board No.	Driver *Preferred Starter	Residence	Owner	Car-Year Make	Engine
54	2.408	Roger Burdick	Syracuse, N. Y.	Paul E. Bowker	'36 Chev.	'70 Chev.
54		Thomas C. Remington	Warrensburgh, N. Y.	George Remington	'65 Corv.	'68 Chev.
55		Billy Bremen	Marmora, N. J.	Elvy Cramer	'37 Plym.	'58 Chev.
55		Ernie Marshall	Pound Ridge, N. Y.	Charles A. Frank	'38 Ford	'69 Chev.
55	31.01 1.809	Gordon Treichler	Sanborn, N. Y.	Howard G. Robertson Jr.	'36 Chev.	'71 Chev.
57		Joe Severage	Wall, N. J.	Fred Burdge	'67 Pont.	'71 Chev.
58	31.305 2.958	*Merv Treichler	Sanborn, N. Y.	Gilbert Bruss	'37 Chev.	'70 Chev.
60X	30.219 2.437	Albert Castrucci	St. Johnsville, N. Y.	Robert Sanders	'38 Chev.	'70 Chev.
61	30.219 0.229	*Richard Evans	Rome, N. Y.	Same	'69 Chev.	Chev.
61		*Richard Evans	Rome, N. Y.	Same	'69 Chev.	Chev.
63	32.335 1.284	Wes Moody	Camden, N. Y.	Same	'37 Chev.	'71 Chev.
65		Joe Konopka	Manorville, N. Y.	George J. Wouters	'70 Mav.	'71 Chev.
65	34.02 2.012	Hal Wilson	Scranton, Pa.	A. J. Cox	'70 Mstng	'70 Ford
66		Tony Cranmer	Cedar Run, N. J.	Don Cranmer	'39 Chev.	'71 Chev.
67		John W. Haberbeck Jr.	Hagerstown, Md.	Edward Breeden	'67 Chev.	'70 Chev.
69		Jean Guy Chartrand	Montreal, Canada	Ed Cloce	'65 Plym.	'71 Plym.
17-69	30.580 31.231	Jim Hurlubise	N. Tonawanda, N. Y.	Ed Cloce	'65 Plym.	'68 Plym.
69				John Pallotto	'37 Chev.	'69 Chev.
72	31.914 2.560	Jim Rudolph	Ransomville, N. Y.	Same	'36 Chev.	'71 Chev.
73	32.409 2.205	*Richard Swartzlander	Sarver, Pa.	Larry G. Peters	'68 Pont.	'68 Chev.
74	30.573 30.120	Roger Treichler	Sanborn, N. Y.	Same	'37 Ford	'70 Chev.
75				Scibelli Bros. Inc.	'67 Mstng	'69 Chev.
77	32.212 2.267	Charles Kremer Jr.	Lakehurst, N. J.	Chas. Kremer Sr.	'37 Ford	'70 Ford
77		Charley Gilmore	Kutztown, Pa.	Same	'38 Plym.	'70 Chev.
80		Rick Thum	Princeton, N. J.	Lou Inzeo	'37 Ford	Chev.
80NY	32.212 2.716	Jerry Mathis	Elma, N. Y.	Same	'36 Chev.	'71 Chev.
81		Norm Janwich	Matawan, N. J.	Mullaney Tire	'63 Ford	'69 Chev.
82	32.584 3.230	Mark Letcher	Kirkville, N. Y.	Ralph Holmes	'38 Chev.	'71 Chev.
X83		Charles M. Seibert	Lake Ronkonkoma, N. Y.	Same	'37 Buick	'70 Chev.
84	32.210	Frank Myroncuk	New Egypt, N. J.	Same	'67 Cougar	'70 Chev.
84Jr		Larry Myroncuk	New Egypt, N. J.	Frank Myroncuk & Son	'38 Chev.	'70 Chev.
21-84	32.206 2.050	Eddie Rafferty	Little Meadows, Pa.	Bob Page	'36 Chev.	'74 Chev.
87		Bill Harman	Niantic, Conn.	Carl Gustafson	'63 Chev.	'69 Chev.
88	31.512 2.160	Mike Loescher	Scottsville, N. Y.	Same	'63 Chev.	'71 Chev.
88		Lou Toro	New Haven, Conn.	Charles Stebbins	'37 Chev.	'71 Chev.
C88	32.024	Ray Sitterly	Amsterdam, N. Y.	Same	'36 Chev.	'71 Chev.
X89		Fred Harbach	Huntington Sta., N. Y.	Ted Harbach	'67 Cam.	'71 Chev.
89	32.000 32.686	Ken Meahl	E. Amherst, N. Y.	Leo Kapturowski	'37 Ford	'71 Chev.
93	32.911 3.332	Peter-Corey Wotts	Waterford, N. Y.	Jerry Rose	'36 Chev.	'69 Chev.
93	33.904 2.634	Blackie Wall	New Alexandria, Pa.	Same	Chev.	'71 Chev.
97	32.891 2.866	*Andrew J. Romano	Johnstown, N. Y.	Joseph Romano	'61 Val.	'71 Chev.

Entry List

OPEN CHAMPIONSHIP



Car No.	Score board No.	Driver *Preferred Starter	Residence	Owner	Car-Year Make	Engine
97	37.495	Tom Leeson	Rochester, N. Y.	Dave Magin	'65 Mstng	'70 Ford
98NY		William J. Brainard	Williamsville, N. Y.	Erylene Housman	'37 Ford	'71 Chev.
98Ct	33.201 33.00	Ron Narducci	E. Haddam, Conn.	Same	'36 Chev.	'70 Chev.
99	37.792	Waynard Forette	Amsterdam, N. Y.	Roerig Bros.	'37 Chev.	'71 Ford
99	30.288 30.288	*Geoffrey Bodine	Chemung, N. Y.	T. K. McLean	'61 Val.	'71 Chev.
99	32.920 37.00	*Bob Malzahn	N. Miami, Fla.	Same	'36 Chev.	'68 Chev.
101		Wally Katulka	Levittown, Pa.	Calvin C. Depew & Son	'37 Chev.	'70 Chev.
117		Don June	Theresa, N. Y.	Same	'37 Chev.	'69 Chev.
120	34.129 33.802	Neal C. Tooley	Dexter, N. Y.	Douglas Dingwall	'36 Chev.	'69 Chev.
231		Blake Carnahan	Manlius, N. Y.	Anthony Vecchio	'62 Falc.	'70 Chev.
317		Larry Voss	Absecon, N. J.	Jim Campbell	'36 Chev.	'70 Chev.
S360	41.559	Don Diffendorf	Endicott, N. Y.	Steven & Wheaton	'37 Ford	'66 Chev.
380	37.067 37.034	Gary Winters	Southold, N. Y.	Same	'67 Merc.	'70 Ford
555		Jay Dilmore	Freeport, N. Y.	Wilbur Dilmore	'37 Chev.	'68 Chev.
707				Paul Deasey	'37 Chev.	'68 Ford
900		Karl Haussel	Latham, N. Y.	Same	'37 Chev.	'70 Chev.
V0		Bill Edkins	Staten Island, N. Y.	Joe McKinney	'38 Chev.	Chev.
X		Ronnie Schwendenmann	Garden City, N. Y.	John Betts	'38 Chev.	'68 Chev.
X	33.230 33.920	Butch Jelley	Pownal, Vermont	Martin Riiska	Chev.	'70 Chev.
9	31.777 35.022	*Sam Beavers	White House Sta., N. J.			
		*Frank Schneider	Flemington, N. J.			
		*Larry Wright	Claysburg, Pa.			
		*Mitch Smith	Harrisburg, Pa.			

33.441 ? 33.956
B. K. KAP

ENTRIES FILED TOO LATE TO CLASSIFY

21		WAGNER		33.003 33.181	Cosella	
12	34.80 34.88	Kod Tavin	N. J.	33.819 33.819	Chamberlain	
35	33.453 33.253	RON BOUCHARD		78 37.865	Riiska	
8	34.900 34.263	LAURE		221 37.456	Carnahan	
0	32.051 32.460	SIMPSON		15 33.455	Boss	
12	37.536 37.600	MAR BIER				
7	34.602 34.228	TOM BALDWIN				
S-2	37.221 37.312	SCALPITIC				
83	37.853 37.934	THUSOLIS				
	37.311 37.357	BALSCH				
		K. B. B. L.				
4	34.012 34.080	WEIGER				
P-7	35.809 35.920	ANDREAS				
56	31.670	G. UHL				

31.666

45 31.957
32.816

these forms for **FOR YOUR CONVENIENCE**

200 MILE NATIONAL OPEN CHAMPIONSHIP RACE

on **SUNDAY, OCTOBER 8, 1972**

at **LANGHORNE INTERNATIONAL MOTOR SPEEDWAY**

TICKET ORDER BLANK

SUNDAY, OCTOBER 8, 1972

200 MILE NATIONAL OPEN CHAMPIONSHIP RACE

LANGHORNE INTERNATIONAL MOTOR SPEEDWAY CORP.
P. O. BOX NO. 277 LANGHORNE, PA. 19047

Please enclose self-addressed stamped envelope
for return of tickets

Enclosed is check or money order payable to Langhorne Int'l. Motor Speedway Corp. in the amount of
\$ _____ in payment for _____ seats at \$ _____ each in section _____. Prices include all taxes.

← 4th TURN FINISH LINE 1st TURN →

Sec. AA	Sec. A	Sec. B	Sec. C	Sec. D	Sec. E	Sec. F	Sec. G	Sec. H
\$6.00	\$7.00	\$7.00	\$8.00	\$8.00	\$8.00	\$7.00	\$7.00	\$6.00

← TRENTON (Please Print) PHILADELPHIA →

NAME _____

ADDRESS _____ PHONE _____

CITY _____ STATE _____ ZIP No. _____

CAMPER TRAILER SPACE APPLICATION

LANGHORNE INTERNATIONAL MOTOR SPEEDWAY CORP.,
P. O. BOX 277, LANGHORNE, PA. 19047

Please send camper-trailer space application for October 6, 7, 8, 1972 to

NAME _____

STREET ADDRESS _____

CITY _____ STATE _____ ZIP NO _____

Enclosed is self-addressed, stamped envelope for return of application form.

Signed _____

**TICKETS & SPACE APPLICATIONS WILL BE
MAILED ON OR ABOUT MAY 1, 1972.**

LANGHORNE SPEEDWAY DIRT TRACK RECORDS

TYPE OF EQUIP. AND EVENT	DRIVER	DATE	TIME	M. P. H.
Midgets - Time Trials	Don Brennan	10-12-47	35.408 sec.	101.6
Midgets - 100 Miles	Fred 'Jiggs' Peters	4-30-61	61 min. 11.92 sec.	94.041
Indianapolis Cars - Time Trials	Don Branson	4-13-60	31.580 sec.	113.996
Indianapolis Cars - 100 Miles	Don Branson	8-26-62	57 min. 15.13 sec.	104.799
Sprint Cars - Time Trials	Don Branson	4-24-60	32.661 sec.	110.223
Sprint Cars - 6 Miles	Mike Nazaruk	5- 1-55	3 min. 22.36 sec.	106.930
Sprint Cars - 7 Miles	Joe Chitwood	5-18-41	4 min. 17.24 sec.	98.054
Sprint Cars - 8 Miles	Mike Nazaruk	4-20-55	4 min. 32.84 sec.	105.556
Sprint Cars - 10 Miles	Bob Sall	5-22-38	5 min. 57.21 sec.	100.840
Sprint Cars - 20 Miles	George Robson	8-11-46	12 min. 20.54 sec.	97.297
Sprint Cars - 25 Miles	Mike Nazaruk	10-31-54	14 min. 17.004 sec.	105.017
Sprint Cars - 30 Miles	Chas. Musselman	5- 1-55	17 min. 27.29 sec.	103.151
Sprint Cars - 50 Miles	Ralph Ligouri	9- 1-57	28 min. 49 sec.	104.106
Sprint Cars - 100 Miles	Jim Hurtubise	8-27-61	57 min. 52.14 sec.	103.714
Sportsman Stock Cars - Time Trials	John Mackinson	10-13-62	35.796 sec.	100.569
Sportsman Stock Cars - 100 Miles	Frank Schneider	10-14-62	1 hr. 13 min. 16.42 sec.	81.884
L.M. Stock Sedans - Time Trials	Joe Leonard (1964 Dodge)	9-13-64	36.214 sec.	99.409
L.M. Stock Sedans - 150 Miles	Jim Hurtubise (1964 Plym)	4-26-64	1 hr. 40 min. 14.46 sec.	89.783
L.M. Stock Sedans - 200 Miles	Fonty Flock (Olds 88)	9-17-50	2 hrs. 44 min. 47.95 sec.	72.820
L.M. Stock Sedans - 250 Miles	A.J. Foyt, Jr. (1964 Dodge)	9-13-64	2 hrs. 38 min. 26.19 sec.	94.675
L.M. Stock Sedans - 300 Miles	Paul Goldsmith (Chev.)	9-23-56	4 hrs. 6 min. 33 sec.	73.002
L.M. Stock Convertibles - Time Trials	Paul Goldsmith (Ford)	9-15-57	39.10 sec.	92.071
L.M. Stock Convertibles - 150 Miles	Curtis Turner (Ford)	5- 5-57	1 hr. 48 min. 35 sec.	82.885
L.M. Stock Convertibles - 300 Miles	Gwyn Staley (Chev.)	9-15-57	4 hrs. 4 min. 2 sec.	73.755

LANGHORNE INTERNATIONAL MOTOR SPEEDWAY PAVED TRACK RECORDS

TYPE OF EQUIP. AND EVENT	DRIVER	DATE	TIME	M. P. H.
Indianapolis Cars - Time Trials	Bobby Unser Wagner-Lockheed Spl.	6-14-70	27.807 sec.	139.463
*Indianapolis Cars - 100 Miles	Al Unser	7-28-68	48 min. 02.89 sec.	122.328
Indianapolis Cars - 125 Miles	Jim McElreath John Zink-Urschel-Slick Spl.	8- 8-65	1 hr. 11 min. 31.535 sec.	104.857
Indianapolis Cars - 150 Miles	Mario Andretti Dean Van Lines Spl.	7-30-67	1 hr. 19 min. 31 sec.	113.183
L.M. Stock Sedans - Time Trials	Bobby Isaac (1965 Dodge)	9-12-65	32.54 sec.	110.633
*L.M. Stock Sedans - 150 Miles	Norm Nelson (1966 Plym)	4-17-66	1 hr. 27 min. 2.28 sec.	103.403
*L.M. Stock Sedans - 250 Miles	Paul Goldsmith (1965 Plym)	10-24-65	2 hrs. 25 min. 42.31 sec.	102.850
*Sportsman Stock Cars - Time Trials	Maynard Troyer	10-11-70	30.470 sec.	118.133
Sportsman Stock Cars - 100 Miles	Will Cagle	10- 9-66	56 min. 52 sec.	105.509
Sportsman Stock Cars - 150 Miles	Don 'Dutch' Hoag	10- 8-67	1 hr. 42 min. 37 sec.	87.707
Sportsman Stock Cars - 200 Miles	Ray Hendrick	10-12-69	2 hrs. 3 min. 6.21 sec.	97.478

*Track, U. S. and World Record

The Langhorne Speedway News

IS YOURS WITHOUT OBLIGATION

Patrons of the Speedway will receive the NEWS by mail regularly.

Fill out and mail one of the post cards requesting that you be placed upon our mailing list.

You may obtain these cards from any of the ushers in the grandstand or at the office.



SPEED? QUALITY? MAN! THEY RUN A DEAD HEAT FOR FIRST IN THIS SHOP!"

CONCESSION PRICES

This is the Official Price List — Pay No More
AT ALL REFRESHMENT COUNTERS AND IN THE GRANDSTAND

Frankfurters	35c
PEPSI-COLA LARGE	30c
Hamburger Sandwiches	50c
Orange Drink	35c
Coffee	15c
Seal-Test Ice Cream	35c
Jumbo Peanuts	25c
Nestle Milk & Almond Bars	15c
Popcorn	35c
Hot or Cold Chocolate Drink	35c
Cigars 15c Cigarettes	55c

ABOVE PRICES INCLUDE 6 PER CENT PA.SALES TAX

One beautiful
beer.



gives your thirst a taste
of life.

C. Schmidt & Sons, Inc., Phila. & Norristown, Pa. and Cleve., O.